



# MESGI'G UGJU'S'N

PARC ÉOLIEN | WIND FARM

[WWW.EOLIENMU.COM](http://WWW.EOLIENMU.COM)

CHRONICLE 5 - MAY 2016  
MESGI'G UGUJU'S'N WIND FARM

# MESGI'G UGJU'S'N WIND FARM

## GWE, HELLO!

Construction of the Mesgi'g Uguju's'n wind farm, located on public lands in the regional county municipality of Avignon, has resumed with the arrival of spring. This 150 MW wind farm, powered by 47 wind turbines, will be commissioned by the end of 2016. The project is being developed by the three Mi'gmaq communities of Gesgapegiag, Gespeg and Listuguj as well as by their partner, Innergex Renewable Energy Inc.

## WORK IN PROGRESS AND AHEAD

Construction of the substation and installation of the substation's control cables continue. Work to excavate the trenches, install the cables and backfill the electrical collector system will resume in May. Once completed, the collector system will be 78 km long and will connect all wind turbines to the substation.

The control centre, which is used to manage the electricity generated by the wind farm, was delivered in early April.

Until August, Hydro-Québec TransÉnergie will continue erecting the transmission line between the substation and the Matapédia-Caspédia line near the municipality of Pointe-à-la-Croix.

Delivery of the wind turbine components will begin in late May after the spring thaw. The components will exit Route 132 and take the road across from the Cédrico facility in Sainte-Florence, then take Chemin Lacroix to reach the construction site. Installation of the wind turbines will begin in June and continue over the summer and into the fall.

Over the next few weeks, the number of workers will fluctuate based on the work being carried out at the site.



## SNOW REMOVAL AND ROAD MAINTENANCE

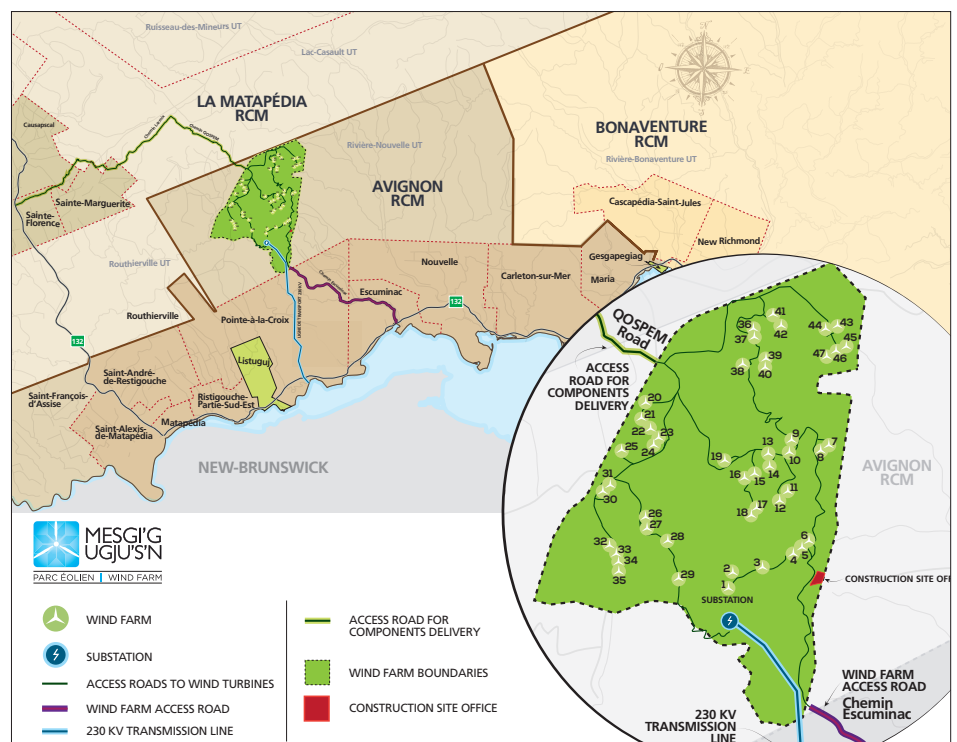
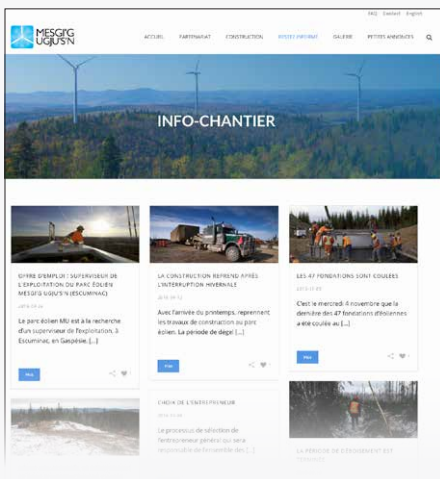
Since mid-March, workers at the site have been clearing the snow from the wind farm's 85 km of roads. The main road has been fully cleared and the teams are now removing snow from Chemin de Sainte-Florence to prepare for the turbine deliveries.

The work site had to be closed temporarily during the week of April 18 due to a deterioration in road conditions caused by the spring thaw. Borea Construction, the general contractor hired to build the wind farm, and Thirau, the Hydro-Québec subcontractor hired to build the 230 kV transmission line, resurfaced several areas of Chemin Escuminac with rock and repaired the road so that vehicles can circulate again at the work site.

## COMMUNITY RELATIONS

To follow the progress of the Mesgi'g Uguju's'n wind farm, listen to the radio reports broadcast on CIEU FM every second Monday, as well as to those on the Gesgapegiag and Listuguj radio stations.

These reports and those published in the newspaper are also available on the wind farm's brand new website ([www.muwindfarm.com](http://www.muwindfarm.com)), launched April 19. Check it out regularly!



AP'NAMULTES, SEE YOU SOON!

## INFORMATION

**LUC LEBLANC**  
Regional Representative  
Phone: 418 794-2164  
Email: [lleblanc@innergex.com](mailto:lleblanc@innergex.com)

**TERRI LYNN MORRISON**  
Mesgi'g Uguju's'n Project Director  
Phone: 418 788-1760, extension 8107  
Email: [tlmorrison@mmcorporation.ca](mailto:tlmorrison@mmcorporation.ca)